

TITLE

SYSTEM

SCALE

**BOTTOM OF WALL**

**VM ZINC® PLUS Vertical Flat Lock Panel ( with recess)**

**1:4 @ A4**

**LEGEND:**

1. VM ZINC PLUS wall flashing
2. Galvanised steel stiffener
3. Anti-insect grid
4. Galvanised steel cleat
5. Fastener
6. VM ZINC PLUS flat lock pane
7. Anti-abrasive building paper
8. 15mm plywood
9. 20mm min ventilation gap

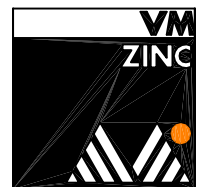
Building Products- VM ZINC  
PO BOX 727 CROWS NEST  
NSW 2065

[www.v zinc.com.au](http://www.v zinc.com.au)  
Tel: (61) 02 9955 4400  
Fax: (61) 02 9955 1144

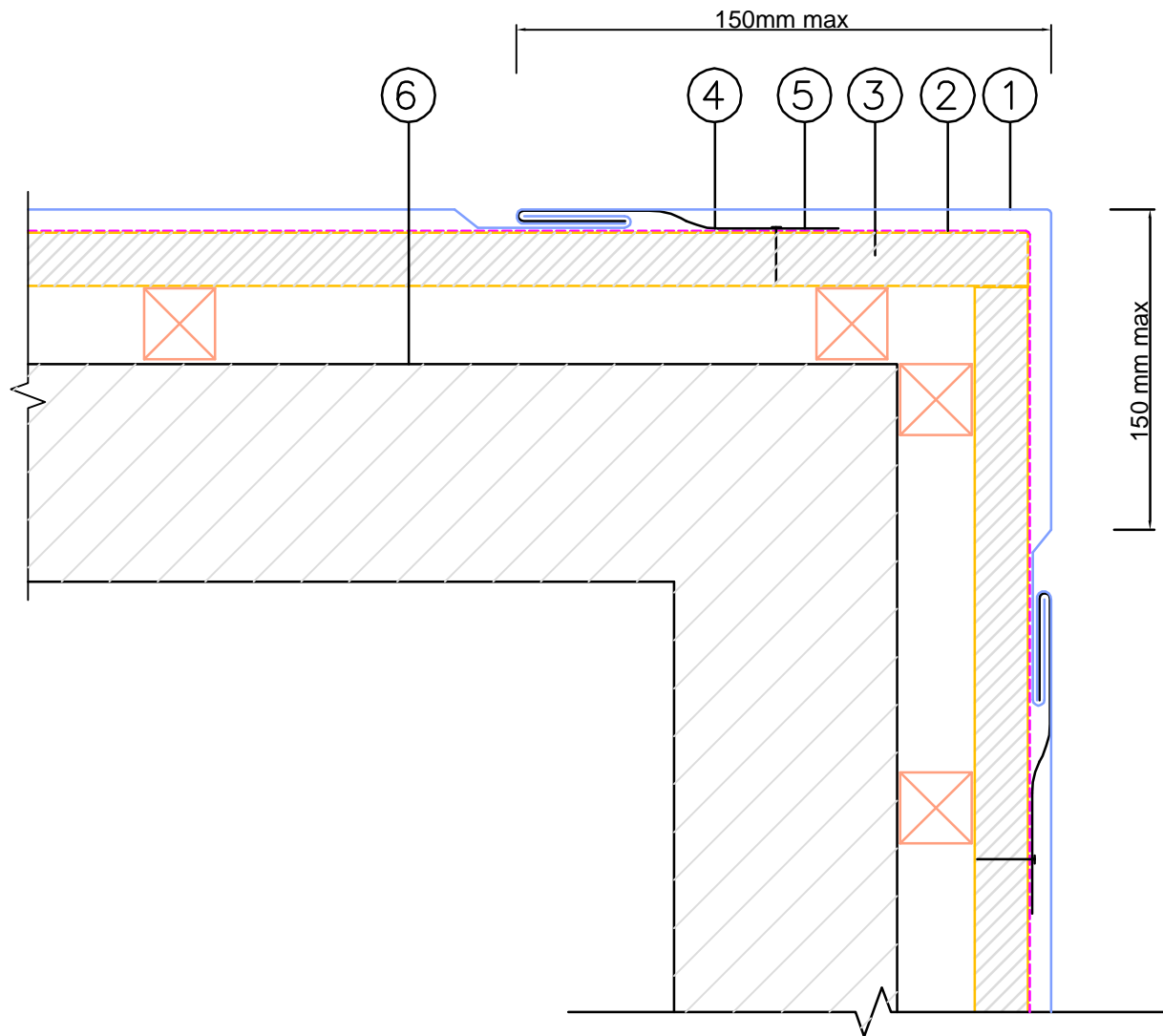
NOT A SHOP DRAWING

FOR ILLUSTRATION ONLY

While all technical information and suggestions herein are believed to be reliable and accurate, nothing stated herein is to be taken as a warranty, expressed or implied. Responsibility for review and validation remains solely with the design authority or other authority having jurisdiction.



A Umicore brand



TITLE

EXTERIOR CORNER

System

VM ZINC PLUS® Vertical Flat lock panel (with recess)

Scale

1:2 @ A4

LEGEND:

LEGEND:

1. VM ZINC PLUS FLP Corner
2. Anti-abrasive building paper
3. 15mm plywood
4. VM ZINC FLP clip
5. 20mm min ventilation gap
6. Main structure ( by others)

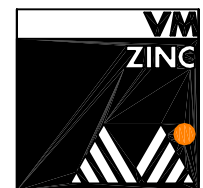
Building Products- VM ZINC  
PO BOX 727 CROWS NEST  
NSW 2065

www.vnzinc.com.au  
Tel: (61) 02 9955 4400  
Fax: (61) 02 9955 1144

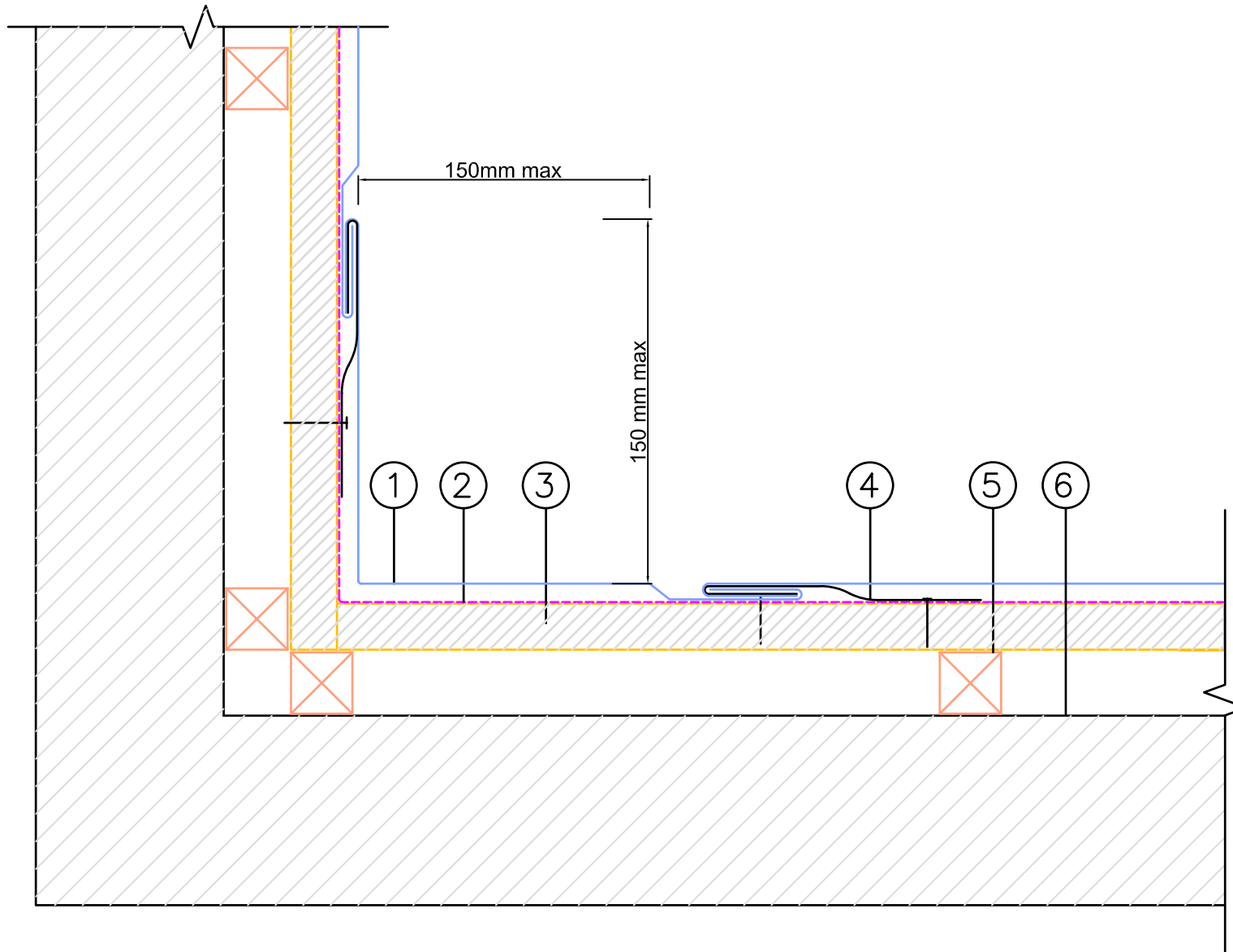
NOT A SHOP DRAWING

FOR ILLUSTRATION ONLY

While all technical information and suggestions herein are believed to be reliable and accurate, nothing stated herein is to be taken as a warranty, expressed or implied. Responsibility for review and validation remains solely with the design authority or other authority having jurisdiction.



A Umicore brand



TITLE

INTERIOR CORNER

System

VM ZINC PLUS® Vertical Flat lock panel ( with recess)

Scale

1:2 @ A4

LEGEND:

LEGEND:

1. VM ZINC PLUS Flat Lock Panel
2. Anti-abrasive building paper
3. 15mm plywood
4. VM ZINC Flat Lock panel clip
5. 20mm min ventilation gap
6. Main structure ( by others)

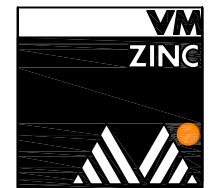
Building Products- VM ZINC  
PO BOX 727 CROWS NEST  
NSW 2065

www.vmzinc.com.au  
Tel: (61) 02 9955 4400  
Fax: (61) 02 9955 1144

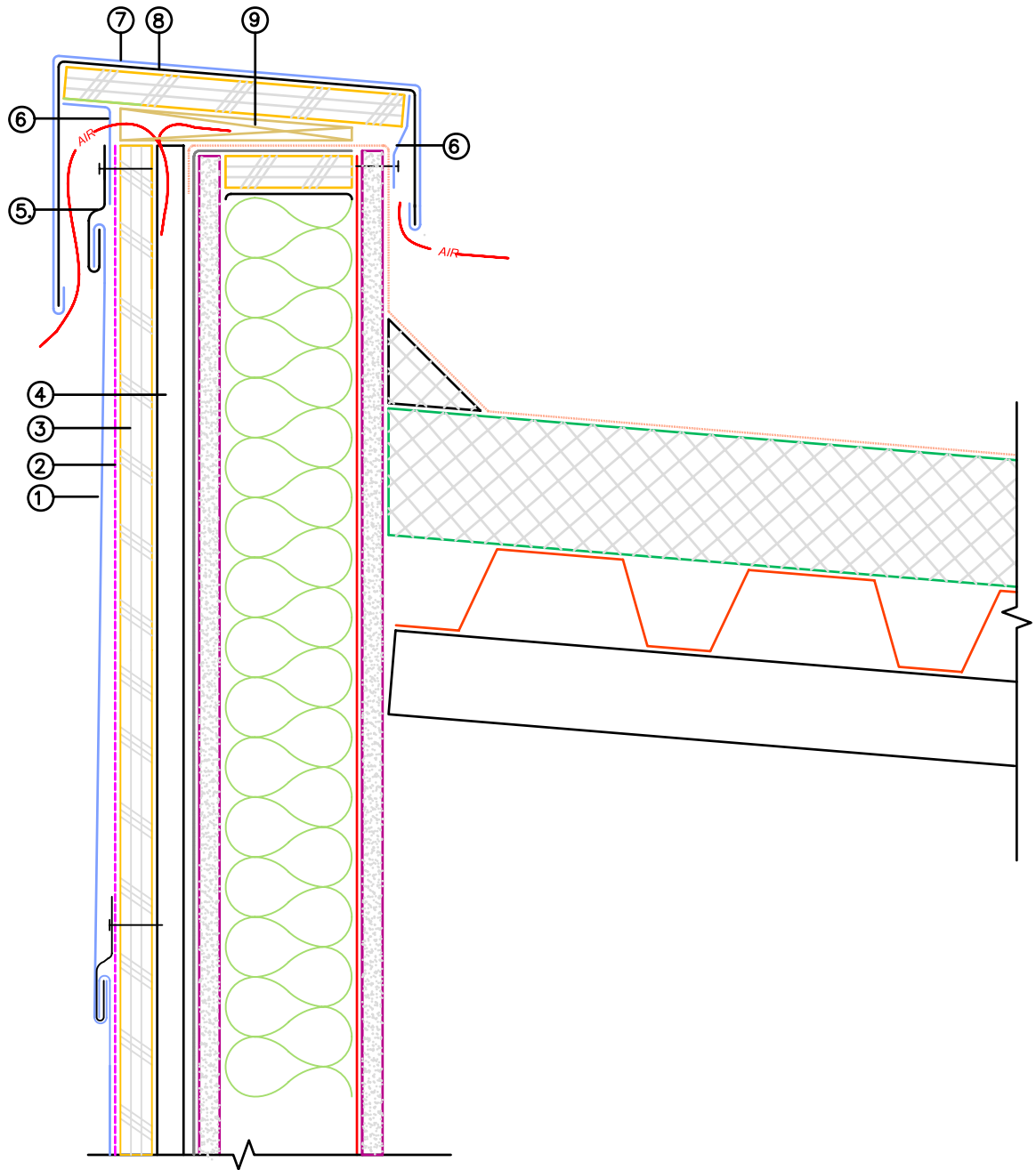
NOT A SHOP DRAWING

FOR ILLUSTRATION ONLY

While all technical information and suggestions herein are believed to be reliable and accurate, nothing stated herein is to be taken as a warranty, expressed or implied. Responsibility for review and validation remains solely with the design authority or other authority having jurisdiction.



A Umicore brand



TITLE

SYSTEM

SCALE

PARAPET

VM ZINC® PLUS Flat Lock Panel ( no recess)

1:4 @ A4

LEGEND:

1. VM ZINC PLUS flat lock panel
2. Anti-abrasive building paper
3. 15mm plywood
4. 20mm min ventilation gap
5. Galvanised steel clip
6. VM ZINC screen vent @50% open minimum
7. VM ZINC PLUS parapet capping
8. Continuous galvanized steel stiffener
9. Wood block

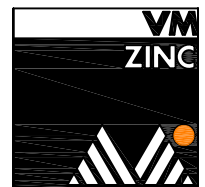
Building Products- VM ZINC  
PO BOX 727 CROWS NEST  
NSW 2065

www.vmzinc.com.au  
Tel: (61) 02 9955 4400  
Fax: (61) 02 9955 1144

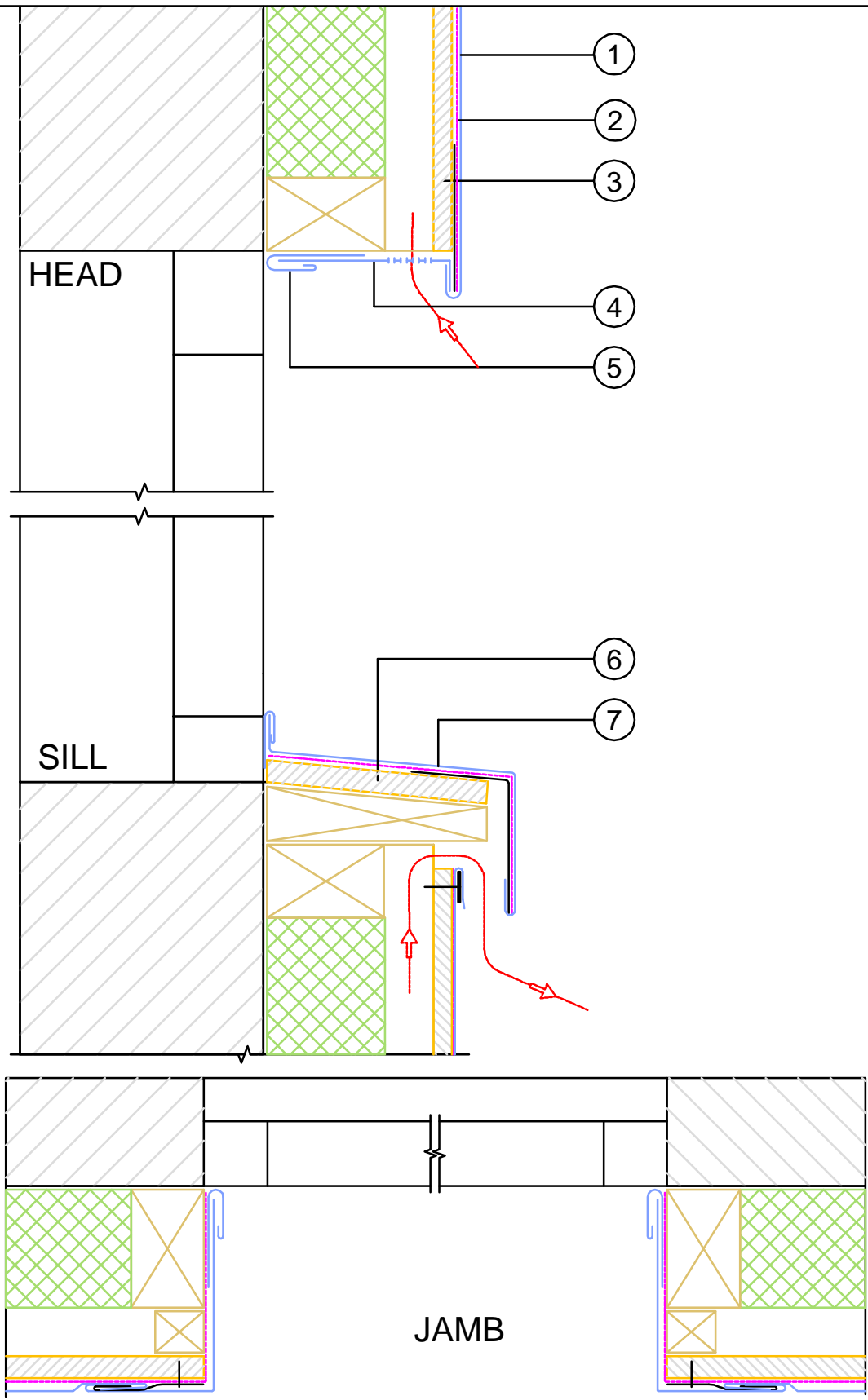
NOT A SHOP DRAWING

FOR ILLUSTRATION ONLY

While all technical information and suggestions herein are believed to be reliable and accurate, nothing stated herein is to be taken as a warranty, expressed or implied. Responsibility for review and validation remains solely with the design authority or other authority having jurisdiction.



A Umicore brand



TITLE SYSTEM SCALE

WINDOW DETAILS VM ZINC® PLUS Vertical Flat Lock Panel ( with recess ) 1:5 @ A4

- LEGEND:
1. VM ZINC PLUS Flat Lock panel
  2. Anti-abrasive building paper
  3. 15mm Plywood
  4. Perforated VM ZINC PLUS bottom piece
  5. VM ZINC PLUS Folded flashing strip
  6. 19mm Plywood
  7. VM ZINC PLUS Sill flashing strip

Building Products- VM ZINC  
 PO BOX 727 CROWS NEST  
 NSW 2065

[www.v zinc.com.au](http://www.v zinc.com.au)  
 Tel: (61) 02 9955 4400  
 Fax: (61) 02 9955 1144

NOT A SHOP DRAWING  
 FOR ILLUSTRATION ONLY

While all technical information and suggestions herein are believed to be reliable and accurate, nothing stated herein is to be taken as a warranty, expressed or implied. Responsibility for review and validation remains solely with the design authority or other authority having jurisdiction.

